

Corrigendum

Corrigendum to "Interpretation of Palaeozoic geofoms with the use of seismic attributes in a region of the Eastern Plains, Colombia" [*Boletín Geológico*, 49(1), 2022]

Laura Carolina Esquivel¹, Fanny Villamizar², Indira Molina¹

¹ University of the Andes. Now at Servicio Geológico Colombiano, Bogotá, Colombia.

² Servicio Geológico Colombiano, Bogotá, Colombia.

Corresponding author: Laura Carolina Esquivel, lc.esquivel10@uniandes.edu.co

Original article: 2022, 49(1) : <https://doi.org/10.32685/0120-1425/bol.geol.49.1.2022.557>

First published: April 24, 2022

DOI: <https://doi.org/10.32685/0120-1425/bol.geol.49.2.2022.686>

The authors regret the error in the map of figure 1 where the location of the area was incorrectly shown, and the error in figure 5 where the connection of well-3 with the Paleozoic was omitted.

The authors wish to apologize for any inconvenience caused. The correct figures are the following:



Figure 1. Location of the study area in the Eastern Plains basin in Colombia

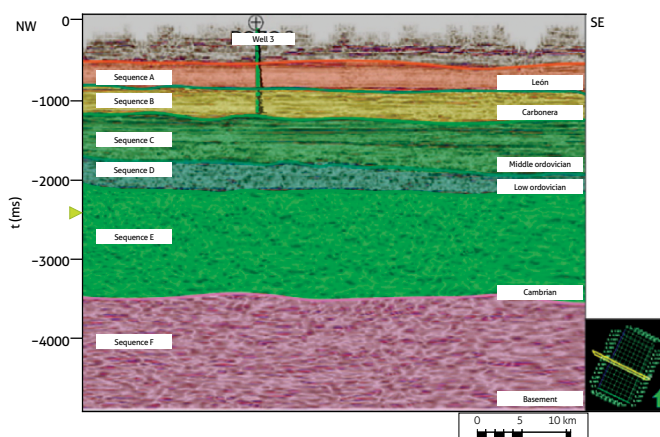


Figure 5. Sequences established for the study area (*Inline*: 650)